



FOREIGN TRADE

OF THE DEMOCRATIC PEOPLE'S REPUBLIC OF KOREA

JUCHE 103
(2014)

2

Traditional Foods

Sinsollo, Pyongyang onban and kimchi were awarded gold prizes in the 1st food festival of Asia held last October in Beijing, co-sponsored by the World Cook Federation and the Cookery Association of China.

Sinsollo is the name of the vessel (a chafing dish) in which the dish is served; it also means the dish cooked in the vessel. The dish tastes marvelous and looks elegant as a complex of dainties of all lands and seas. Made up with over 30 kinds of raw materials, it is still favoured by Koreans.

Pyongyang onban is boiled rice in chicken soup garnished with mung-bean pancake, chicken and mushroom. This is a composite nutrition food containing most of the nutritive elements essential for human body.

Kimchi was created, developed and enjoyed by Koreans since olden times. It is made by mixing such vegetables as cabbage and radish with spices, including garlic, Welsh onion, red pepper and salted fish, and fermenting this mixture. So it tastes fresh, sweet and sour, spicy and refreshing.

Low in cholesterol and rich in fibroid material, kimchi is efficacious for arresting the growth of cancer cells. In particular, it is good for preventing SARS and bird flu.

These foods are welcomed by not only Koreans but foreigners for their special taste and distinctive flavour.

Korea Oknyu Trading Corporation

Add: Phyongchon District,
Pyongyang, DPR Korea
Tel: 850-2-18111-8713
Fax: 850-2-381-4410
E-mail: oknyu@star-co.net.kp



Contents

QUARTERLY JOURNAL

June 103 (2014) No. 2 (431)

2. SEZ Development and Its Prospects in the DPRK
3. Investment-encouraging System in the DPRK
4. Newly-Built Structures



8. A Full Range of LED Lights

10. Production and Export of Glass Products Boosted



12. A New Green Industry Established
13. Small-size Tractor
13. Portable Soil Analyzer

14. Korea Rokson General Trading Corporation

16. Credible Furniture Maker

18. Taedonggang TV Factory

19. Sports Tourism Enlivened

19. Korea Kwail Trading Corporation

19. Enclosed Batteries



20. High-Grade Building Materials

22. Pyongyang Songsil Electronic Automation J.V. Company



24. Welcome to the Masikryong Ski Resort

28. Guide to 2014 Pyongyang Int'l Trade Fair

30. Saetvintang J.V. Company



32. Aikang Patent & Trademark Office



Kaesong Koryo Hangsam Powder



"Poitonggang" Motorcycle

FOREIGN TRADE



Kwangmyong LED & solar cell production centre

Editor: Kim Son Ok,
An Hyang Suk

Photo: Kang Chol Song,
Jon Son Il

The quarterly journal "Foreign Trade of the DPRK" is available in English, Russian, French, Spanish, Chinese and Japanese versions.

Please visit <http://www.naenara.com.kp>

Published by the Foreign Trade Publishing House

Add: Sochon-dong, Sosong District,
Pyongyang, DPR Korea



THE CHAMBER OF COMMERCE
OF THE DEMOCRATIC PEOPLE'S
REPUBLIC OF KOREA

P.O.Box 89
Add: Jungsong-dong, Central District,
Pyongyang, DPR Korea
Tel: 850-2-3815926
Fax: 850-2-3815827
E-mail: micom@silbank.net.kp
E-mail: micom@str-co.net.kp

SEZ Development and Its Prospects in the DPRK

(An interview with Kye Song Nam, director of the State Economic Development Commission of the DPRK)

Reporter. I would like to know about the basic mission of the State Economic Development Commission.

Director. The State Economic Development Commission is a state-run organ which carries into effect the DPRK government's external economic policies related to establishment and management of not only existing special economic zones (SEZs) but also economic development zones to be newly set up in each province, in keeping with the global trend of economic exchange and cooperation among countries.

Its mission is to undertake the whole work arising in economic zone development, including selection of SEZs, drawing up of zone development strategy, attraction of investment and tax administration.

Reporter. I was told that SEZs have already been developed and are in operation in the DPRK.

Director. That's right. Our country has made strenuous efforts to establish and manage SEZs from long ago. The Rason Economic and Trade Zone, Hwanggumphyong-Wihwado Economic Zone, Kumgangsan International Special Tourism Zone and Kaesong Industrial Park have already been established and are in full operation.

The Rason Economic and Trade Zone, the first of its kind in our

country, borders on China and Russia along the Tuman River, with Japan just across the sea on the east. Thanks to its geographical and economic advantages, the zone is attracting great attention of the world as the days go by.

Construction of Rajin-Wonjong road has been completed and a large number of projects for economic development in different fields, like laying of power-transmission line, renovation and operation of Rajin Port, renovation of Rajin-Naeryang railways and construction of Sonbong-Paekhak Industrial district, building-materials industrial district and high-efficiency agricultural model district, are making good headway. With the development of Hwanggumphyong-Wihwado Economic Zone promoted and the railway section between Rajin and Khasan renovated, the Rason Economic and Trade Zone took facelift as a transit trade zone.

The Maskryong Ski Resort has been constructed, the tourist attractions in the Wonsan area are under development and the Kumgangsan International Special Tourism Zone has already been open to the public.

Future project for developing tourism zones to be set up in different areas of the country is optimistic.

Reporter. Would you please tell me about the activities for the development of SEZs and its prospective plan?

Director. The DPRK government enacted and promulgated the Law on the Economic Development Zone aimed at establishing and operating economic development zones in favourable areas of our country in May 2013 in keeping with the requirements of the developing economy so as to promote economic relations with other countries.

The government is making an endeavour to establish economic development zones on the principles of rationally utilizing land and resources, protecting natural and ecological environment, encouraging business activities, increasing international competitiveness and, at the same time, ensuring the common interests of society.

All the rights of invested-enterprises such as personal safety, invested assets, intellectual property rights and legitimate income in the zone are protected by law of the DPRK.

Foreign entrepreneurs are entitled to receive preferential treatments in land use, labour employment, tax payment, etc. and, in particular, those who intend to build infrastructure in the zone are granted with more favourable ones.

In establishing the economic development zones, the government provides sufficient conditions to foreign investors so that they can develop and operate enterprises individually or jointly in the areas advantageous for strengthening external economic cooperation and exchange and conducive to the development of the economy, science and technology.

We have created 13 economic development zones as of November 2013 in due consideration of the master plan for land development, topographical features, the level of economic development and human and material resources of each province, and decided to set up a SEZ in the area of Sinuiju.

The project is now in progress for making the master plan for development in every economic development zone.



Reporter. What about foreign response to SEZ development which is well under way?

Director. Our country is provided with all the conditions advantageous for investment, including social and political stability, solid legal environments like the Law on Foreign Enterprises and other investment-related laws, favourable natural and geographical conditions and abundant manpower and material resources. All these evoke a splendid response from foreign enterprises who wish to invest in SEZ.

The International Conference on Special Economic Zone was held in October 2013 in Pyongyang. It brought together lawyers and economists from Canada, Malaysia, the US, Vietnam, India and Hong Kong. They exchanged experiences of having developed SEZs both in the DPRK and foreign countries.

During the conference, an investment forum, meetings between business partners and field inspections were organized and agreements on investment were concluded in such fields as: mining, metallurgical, machine-building, electronics, building-materials and light industries. The number of foreign entrepreneurs and investors who are interested in economic zones established in our country is rapidly increasing.

The DPRK government will provide preferential and favourable investment climate for all foreign entrepreneurs who are friendly towards our country and hope to invest in it, and heartily welcome businessmen and investors who are interested in the development of SEZ.

State Economic Development
Commission of the DPRK
Tel: 850-2-3815812
Fax: 850-2-3815889
E-mail: sgbed@star-co.net.kp

Investment-encouraging System in the DPRK

The DPRK holds it as its consistent policy to expand and develop investment relations with other countries.

Its government has enacted a series of investment-related laws, including the Law on Foreign Investment, to encourage foreign investors to invest within its territory on the principle of complete equality and mutual benefit, protect their investment and ensure their legal rights and interests.

The DPRK has established socio-economic systems to facilitate foreign investment.

The Socialist Constitution of the DPRK stipulates in its article 37 that the State shall encourage institutions, enterprises and organizations in the country to conduct equity or contractual joint venture with foreign corporations and individuals, and to establish and operate enterprises of various kinds in special economic zones.

Following the adoption of the Law on Equity Joint Venture, the first of its kind, on September 8, 1984, the DPRK enacted scores of other foreign investment-related laws such as Law on Contractual Joint Venture, Law on Foreign Investment, Law on Foreign-invested Business and Foreign Individual Tax, Customs Law, Law on Environment Protection, Insurance Law, and Law on External Economic Arbitration. Continuing to amend and supplement the laws and regulations in line with the prevailing conditions and developing trend of the international investment relations, it has created favourable legal environment for smooth foreign investment activities.

Most recently it promulgated the Law on Economic Development Zone with a view to establishing economic development zones in the favourable areas in the country for the purpose of further promoting external economic relations with different countries of the world.

The principled issues and procedures for organization and operation of foreign-invested enterprises such as establishment, management, settlement of accounts, distribution of profits, dissolution, liquidation and settlement of disputes of foreign-invested enterprises like equity and contractual joint ventures have been stipulated comprehensively, creating an environment favourable for foreign investment.

Preferential treatment and privileged conditions are offered to foreign-invested enterprises.

Tax is not levied on income from dividends that a foreign-invested enterprise, including equity or contractual joint venture, established within the territory of the DPRK, has earned through its business activities. When a foreign-invested bank gives loan or grant to the government or a state bank of the DPRK in such favourable terms as low interest rate or over ten years of redemption including grace period, the income tax of interest income of the enterprise may be exempted.

And when a foreign-invested enterprise in the encouraging sector or a foreign-invested enterprise in the production sector in the Rason Economic and Trade Zone has operated its business over ten years, the income tax of an enterprise shall be exempted for three years from the profit-making year and reduced within the scope of 50% for the following two years.

As for a huge investment project like infrastructure construction, the enterprise income tax shall be exempted for four years from the profit-making year and reduced within the scope of 50% for the following three years. Various preferential treatments such as favourable land lease, priority loan and returning of part or whole of the enterprise income tax shall be granted to the enterprises in the sectors under the State's encouragement, such as the enterprises that introduce cutting-edge science and technology and equipment, produce internationally competitive goods or scientific R&D institutions, according to their characteristics and extent of their contribution to the State.

Today the DPRK government constantly maintains the policy related with foreign investment in order to attract investing enterprises contributive to economic development and betterment of people's livelihood on the principle of protecting politico-economic interests of the country, and establish and perfect the legal system for foreign investment as required by the external economic development, thereby creating a more favourable investment climate for foreign investors.

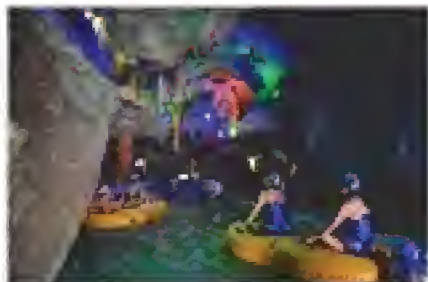


Newly-built Structures



The DPRK preserves the Juche character in architecture in keeping with the demands, interests and aspirations of the people.

When talking about material and cultural wealth created by mankind, they often think about architectural structures first.



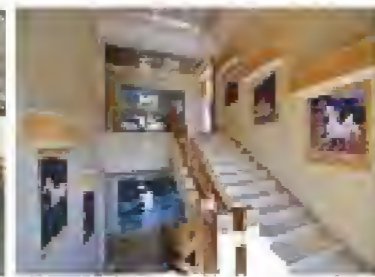
Nothing is more closely linked with human life than architecture among what has been created through the creative labour of mankind.

Therefore, material needs, customs, feeling and emotion of the people of the corresponding times and all other aspects of their life are reflected in architectural structures.

Recently many buildings pulsating with the mettle of the times have been erected one after another in the DPRK, giving a new appearance to it.

A few years ago Changjon Street, which is composed of high-rise apartment blocks, the People's Theatre, Pyongyang Children's Department Store and cultural and service amenities, was built in Central District of Pyongyang, sprucing up the general appearance of the city. It was followed by many other structures built last year. They combine convenience and aesthetics in a formative and artistic way.

In the Munsu Water Park, which covers an area of 109 000 square metres and is composed of outdoor wading pool furnished with slides and water pools, indoor wading pool, gymnasium and Munsu Rehabilitation Clinic, the



working people and youth and students can lead a cultural and emotional life, enjoying swimming and various kinds of exercises all the year round.

All the architectural elements of the water park are designed to ensure the cubic effect of the space and formative quality so as to sustain its character while harmonizing well with the natural beauty of the Taedong River.

The Mirim Riding Club built in a suburb of Pyongyang is designed in line with its features and utility.

The club occupies a total area of 627 000 square metres and provides all conditions and environment for horse riding and education in it. It has various



kinds of tracks, training grounds, dissemination hall of horse riding knowledge, rehabilitation centre, veterinary hospital and stockbreeding research institute.

The tracks, buildings, park, artificial hill, pond and all other elements in it are organically combined with one another.

For fantastic rocks of various shapes and sizes and a waterfall cascading down, the artificial mountain gives you a pastoral joy of the nature.





Covering a total area of 32 800 square metres, the six-storey Okryu Children's Hospital is also unique in architectural style.

The exterior of the hospital is designed in the form of a mother's bosom embracing her children with open arms, and its treating rooms, operating rooms and sick-rooms equipped with up-to-date facilities, classrooms for in-patients, play areas and resting halls are all laid out to be suited to the children's psychology.

The Masikryong Ski Resort built in the area of Masik Pass in the central part of the country is another excellent example.

Quite spectacular is the panoramic view of the resort equipped with ten silvery ski slopes, sledge courses, ice rink, chairlifts, travelators, snowmobiles, snow cannons and snow grooming machines.

Blending harmoniously with the idyllic scenery of the mountainous area, the Masikryong Hotel, furnished with latest facilities and with an accommodation capacity of hundreds of



persons, adds to the exquisiteness of the resort.

The resort is frequented by many ski fans at home and abroad.

Having contributed to ushering in a heyday of the development of Juche-

oriented architecture, all these monumental structures are prototypes of architecture appropriate to a civilized socialist nation and epitomize the bright future of the country which will prosper for ever.



A Full Range of LED Lights

The Kwangmyong LED & solar cell production centre under the Korea Kuwobong Group is a manufacturer of green products which provides a springboard for developing the DPRK's LED industry.

The centre constitutes an integral whole of R&D, production and export of LED lights.

It annually turns out tens of millions of pieces of LED lights. Its whole production processes ranging from command of

production to operation of equipment are comprehensively controlled at the central control room.

The LED production process for sealing, measuring and sorting LEDs is equipped with computer-controlled chip expander, automatic gold-wire bonding, fluorescent powder injection machine and other machines. Sealed LEDs are sorted and selected by an automatic spectroscope according to optical and electrical parameters.

Furnished with precision machines for conducting leadless soldering and detecting faulty soldering by an automatic optical check-up, the SMT (surface mounting technology) workshop produces various kinds of chip boards and power units for LED lights.

The flow-line workshop assembles more than 20 kinds of LED lights from 3W, 5W and 10W to 200W, including globe-shaped lights, daylight lights and projection lights. These products are packed through inspections for measuring optical and electrical parameters.

Over 1 000 pieces of 20-odd kinds of LED lights for interior, outdoor and ornamental lighting which are used under different environmental conditions are on display at the exhibition hall built in a unique architectural style.

The centre has so far made a great contribution to ensuring LED lighting in several construction projects.

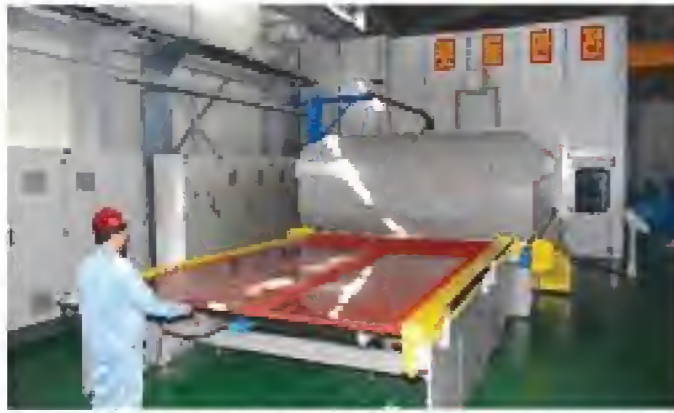
The Korea Kuwobong Group is directing close attention to consolidating material and technical foundations of its existing production processes and expanding economic and trade relations with other countries.



Korea Kuwobong Group
 Add: Mangyongdae District, Pyongyang, DPR Korea
 Tel: 850-2-18111-3812100
 Fax: 850-2-3814410



Production and Export of Glass Products Boosted



The Korea Glass Export and Import Corporation is engaged in the export of flat glass produced at the Taean Friendship Glass Factory.

Relying on resources rich in Korea, like silica, feldspar and dolomite, the factory turns out a wide range of special glass badly needed in all spheres of the economy, including building-materials, medical appliance, foodstuff and chemical industries with flat glass as its main item.

At the flat glass production processes consisting of selection of sand, mixture of raw materials, moulding, slow cooling, cutting and packing, the temperature, output quantity and other technical indices are controlled by an integrated production and management system.

Flat glass 3mm to 12mm (thick.) and 1 000x 1 600mm and 2 000x1 600mm (WxL) is featured by superior surface finishing and transparent colour, and its annual output reaches hundreds of thousands of square metres.

Since the start-up of its operation, the factory has reinforced the second-stage glass processing centre for the purpose of turning out heat reflecting glass and hard glass, thus undergoing radical change as a flat glass production centre.



Doors, glass fittings, glass for motorcars and trains and glassware made from heat reflecting glass and hard glass of silver-grey, silver and green colours are superior in quality.

The corporation will, in future, export a large quantity of flat glass to Asia, Europe and the rest of the world, while satisfying the domestic needs for numerous construction projects.

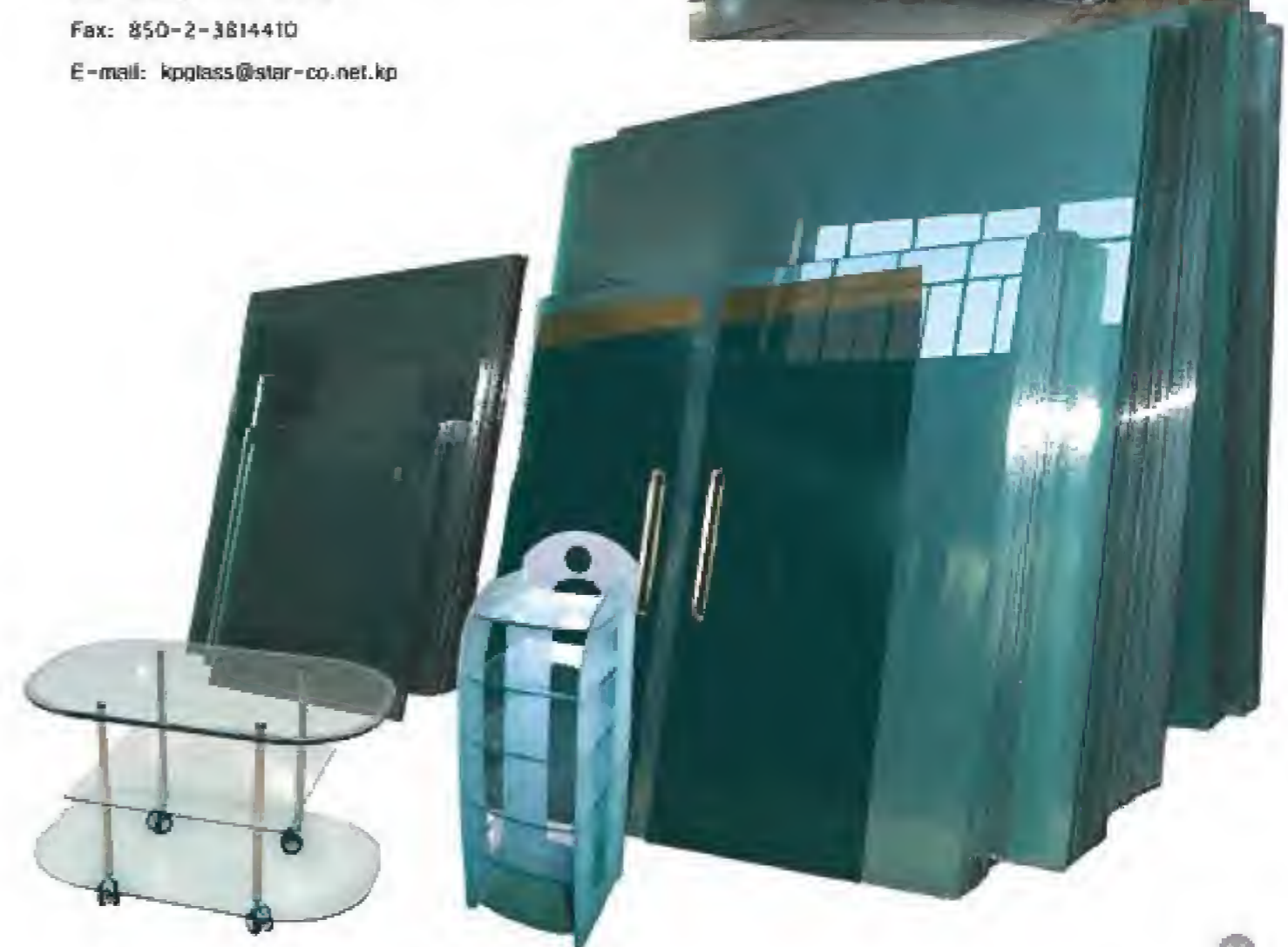
Korea Glass Export and Import Corporation

Add: Tongdaewon District, Pyongyang, DPR Korea

Tel: 850-2-18111-3818414

Fax: 850-2-3814410

E-mail: kpglass@star-co.net.kp



A New Green Industry Established

The air-conditioning equipment production centre, a merger of the Korea Air-Conditioning Equipment Designing Institute with the Rokhno J.V. Company is a green industry enterprise which engages in R&D, production and trade of air-conditioning equipment. The centre is in position to assemble and manufacture a wide variety of PLC-controlled air-conditioning equipment, including geothermal pump, water cooler for air conditioner, heat recovery apparatus, plate heat exchanger and reheater.

These equipment have a promising prospect as eco-friendly ones for their low production cost and high energy saving. Geothermal pump using heat energy accumulated under the strata as a cooling and heating source is an energy-saving and eco-friendly apparatus for air-conditioning system and hot-water supply.

Geothermal pumps and water coolers for air conditioners produced at the centre were installed in the Munsu Water Park, People's theatre, sports village on Yanggak Island and other structures, and are now proving effective. Staffed with competent researchers and equipped with up-to-date facilities, the centre is paying close attention to R&D and production of varieties of green products that are high in quality and efficiency, eco-friendly and low in production costs.

It is now exerting itself to open up new application spheres based on its scientific and prospective business strategy and to bolster up exchange and cooperation with foreign countries.

Rokhno J.V. Company

Add: Pyongokse District, Pyongwang, DPR Korea
Tel: 850-2-1811-3818100
Fax: 850-2-3814410



Small-size Tractor

Small in size, light in weight and versatile.

Technical specifications

Standard traction force	3 800N
Min. turning radius	3 100±0.2mm
Wheel track: front	900mm
rear	960mm
Starting system	manual/self-start
Revolution	540rpm
Outer dimensions	2 860x1 260x1 820mm
Weight	840kg

Korea General Machinery Trading Corporation
Add: Tongdaewon District, Pyongyang,
DPR Korea

Tel: 850-2-18555-3818102

Fax: 850-2-3814495

E-mail: klgje@star-co.net.kp

Portable Soil Analyzer

The Ryonghun Technology Joint Venture Company has developed a new type of portable soil analyzer which is designed to estimate the fertility of soil on the spot by measuring its pH, electric conductivity, salinity and total amount of water-soluble salt without using any chemical reagent.

It can also measure not only the content of humic acid contained in peat but also that of water-soluble humic acid in the process of preparing humic acid solution. It is very convenient for use, irrespective of places. Its standard accessories include 3 cups, a spoon, an electronic balance, a measuring instrument and 4 sensors.

Technical specifications

Power required:	DC 6V±10% (1.5V dry battery x 4)
Working environment:	temperature 10-30°C
	relative humidity ≤85%
Weight:	1 kg

Measuring value

Index	Unit	Measuring band
Conductivity	ms/cm ²	0.10-5
Salinity	%	0.0001-0.5000
Total amount of water-soluble salt	mg/lit.	100-1 000
Humic acid	%	0.02-0.1
pH		3.0-12.0

Ryonghun Technology Joint Venture Company

Add: Sosong District, Pyongyang, DPR Korea

Tel: 850-2-18111-2100

Fax: 850-2-381-4410

E-mail: isbrnh@star-co.net.kp



Korea Roksan General Trading Corporation

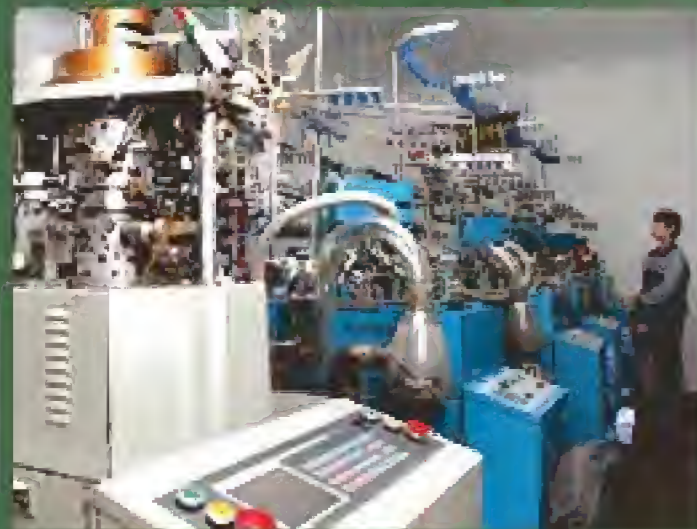
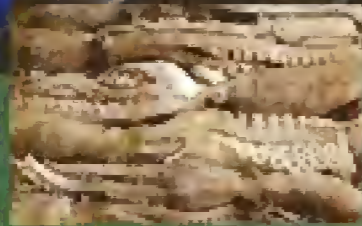
The Korea Roksan General Trading Corporation is carrying on brisk trading activities through Korea Roksan Mineral Ore Corporation, Hangbo J.V. Company, and other processing centres of nonferrous metals, garments, nsam and marine products in Pyongyang, Nampho, Kaesong, Hamhung and Chongjin.

The Korea Roksan Mineral Ore Corporation is boosting production and export of lead, zinc, gold, silver and other nonferrous metals relying on modern smeltery and mine.

The Hangbo J.V. Company has an up-to-date marine processing centre furnished with 3 000-ton capacity refrigerating facilities,

which mass-produces various kinds of processed seafood of blue crab, ark shell and shortnecked clam caught in the pollution-free West Sea of Korea.

The Meari Shooting Gallery with a shooting range, an archery ground and a physical training room is always crowded with visitors.



The general corporation is directing its great efforts to putting its business management on a more scientific footing and furthering production and trade business on a higher level.

Along with this, it makes every effort to further strengthen its existing material and technical foundations and promote exchange and collaboration with many countries.

Addr. Pathonggang District,
Pyongyang, DPR Korea
Tel: 850-2-18111-3818321
Fax: 850-2-3814410



CREDIBLE FURNITURE MAKER

Haewon Furniture Factory of the Haewon Shipping Trading Corporation
Add: Rangnang District, Pyohngyang, DPR Korea
Tel: 850-2-181118083 Fax: 850-2-3814541
E-mail: haewon@star-co.net.kp

Energy-saving windows from the Haewon Furniture Factory of the Haewon Shipping Trading Corporation were showcased at the 9th Pyongyang Autumn International Trade Fair held in September 2013, winning popularity among visitors.

The window creates a comfortable feeling in a room for its excellent effects of sound, heat, wind, and humidity-proofing.

Built in April 2004, the factory turns out varieties of luxurious furniture and other wooden products as well as ordinary furniture fit for family and office.

It consists of a designing institute which researches and develops a full range of furniture

of novel design in keeping with the global trend of furniture making, a spacious open yard, a wooden and plastic window sash workshop and an ordinary furniture workshop.

It has so far enlarged its business scope under a long-range program, and is increasing the kind of products by over two times greater than the previous years and boosting its output.

The factory will redouble its efforts to expand and develop into a promising furniture maker in accordance with the management strategy aiming at developing new items of products and maintaining credit-first principle.





Taedonggang TV Factory

The Taedonggang TV Factory is a nation's leading manufacturer of colour TVs which has been equipped with the latest production processes in keeping with the requirements of the new century.

Situated on the outskirts of Pyongyang, the factory has several workshops for magnetic substances, metal processing, plating of printed circuit, moulding and coiling and a branch factory for assembly of colour TVs. Its daily assembling output is thousands of sets.

The LCD TV assembling workshop where constant temperature and humidity, and dust-proofing are thoroughly ensured carries on its production by an integrated management system. It is operated on an assembly line fitted with colour analyzers, controllers for balance of whiteness, test machines for insulation resistance

and compressive strength and other modern machines.

The factory produces 15-29 inch colour TVs of Samilpho, Tabaksol and Osongsan brands and 15-42 inch LCD TVs of Samilpho, Unbangul and Haeboragi brands. These TVs are on the growing demand for their excellent features of multifunction.

Along with this, it also mass-produces high-performance electric and electronic appliances, including piezoelectric speakers, TV antennas and amplifiers.

It is staffed with a number of competent technicians and skilled workers as well as a R&D team for developing new products.

The factory is focusing its deep attention on promotion of exchange and cooperation with many countries so as to boost the production of different types of TVs upon clients' demands and develop processing trade.

Korea Samgwang Trading Corporation
Add: Songyo District, Pyongyang,
DPR Korea
Tel: 850-2-18111-3818416
Fax: 850-2-3814443
E-mail: koelsk34@star-co.net.kp



Sports Tourism Enlivened

The Korea International Sports Tourist Company commenced its business in 1994 as a state-run service agency which renders satisfactory services to foreign tourists on a visit to the DPRK on the principles of equality and mutual benefit.

Its tourist services include:

Visit to cities: Pyongyang, Kaesong, Nampho, Wonsan, Hamhung and other cities and industrial districts.

Sightseeing: Mts. Paektu, Kungang, Myohyang and Chilbo.

Visit to sports facilities: Kim Il Sung Stadium, May Day Stadium, gymnasiums in Chongchun Street, Yanggakdo Football Stadium, Samjiyon and Masikryong ski resorts and Mirim Riding Club.

Sporting tour: Domestic/international games and friendly matches including mountaineering, golf, bowling, shooting, skiing, swimming, archery and other sporting events.

The company, staffed with competent guides and interpreters, provides other services for convenience of foreign tourists, such as issuance of entry and exit visas, arrangement of tourist itinerary, business talks and seminars on political, economic and cultural issues, and preparation of guides, vehicles, hotels and restaurants.

It will do its best to render kind services to them so that they will have a better understanding of Korea and enjoy a pleasant time during their stay.

Korea International Sports Tourist Company
Add: Mangyongdae District, Pyongyang, DPR Korea
Tel: 850-2-18119-6132/6133 Fax: 850-2-3814410
E-mail: kisto@star-co.net.kp

Korea Kwail Trading Corporation

The Korea Kwail Trading Corporation engages in the export of varieties of fruits such as apple, pear, peach, persimmon and walnut and the import of facilities and materials for fruit growing and processing.

At present the DPRK blessed with natural and geographical conditions favourable for fruit farming is making a leaping progress in pomiculture by increasing state investment in this sector.

The Pyongyang Fruit Farm, Ryongjon Fruit Farm, Toksong Fruit Farm, Kosan Fruit Farm, Taedonggang Combined Fruit Farm and other large fruit farms sprang up all over the country and are producing choice fruits in large quantities. They all have rosy prospects.

Grafting of short apple trees was industrialized by tissue culture on the basis of cutting-edge bioengineering technology and fruit growing and processing are put on a scientific and modern footing. Thus, the technologies of cultivating and processing fruits are developing as days go by.

Supported by such a production and technological foundation, the corporation produces tasty and nutritive fresh fruits of various kinds in large quantities according to its scientific management strategy, with the result that it makes a tangible contribution to the betterment of people's livelihood and development of foreign trade.

The corporation with modern fruit processing bases turns out a wide variety of processed fruits such as fruit juice, canned fruits, fruit jelly and dried fruit in slices as well as fruit wines.

The corporation is looking forward to further cooperation with other countries in advanced fruit growing and processing technologies with a view to increasing their production and export.

Add: Central District, Pyongyang, DPR Korea
Fax: 850-2-381-4410

Enclosed Batteries



These batteries ensure a long service life without replenishing battery acid.

Specifications:

For starting: 12V/24, 45, 55, 60 and 70Ah

For power: 12V/40, 70, 100 and 150Ah

Taewon Battery J.V. Company
Add: Phyangchon District, Pyongyang, DPR Korea
Fax: 850-2-3814410





High-Grade Building Materials

Pyongyang Jonghyang Technology J.V. Company
Add: Central District, Pyongyang, DPR Korea Fax: 850-2-3814410 E-mail: jhtech@star-co.net.kp



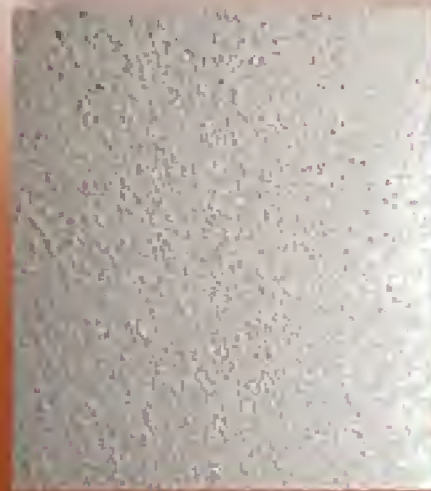
The Pyongyang Jonghyang Technology J.V. Company is a leading producer of a wide range of high-grade building materials, including colourful paint for interior and exterior walls, anti-rusting paint, sound-absorbing perlite paint and tile, infiltrating waterproof agent, decorative glass tile and heat-insulating materials.

Since its establishment in March 2007, the company has developed various kinds of paints and waterproof agents, which were registered as KPS (DPRK standard) and obtained patents.

It turns out lustre, semi-lustre and lustreless acrylic paint for interior and exterior walls, lustre roofing points of diverse colours and anti-corrosive paint for vessels and other steel structures.

These products are enjoying a good reputation for their strong adhesive strength, covering power and water- and rust-resistance.

As a natural inorganic paint featured by excellent sound absorption, colourful decorative effects, strong adhesive strength and high weather resistance, the sound-absorbing paint has obtained the DPRK patent.



Sound-absorbing perlite tile is a natural building material that produces splendid sound-absorbing effect in high-pitched and middle compass, in particular in whole-tone compass. It is in wide application to banquet halls and theatres.

Concrete water-reducing agent is widely used in building skyscrapers for its property of intensifying hardness of building parts and elements. It guarantees high quality in construction of bridges, barrages, dams and tunnels. When 0.5-1 % of the agent is added to concrete, its hardness is increased by 1.5 times.

Infiltrating waterproof agent is effective for protecting buildings from moisture and keeping their original appearance. Therefore, it is in wide use in waterproofing roof, bathroom and underground structures.

Decorative glass tile is coated with different colours of acrylic paints. It is in great demand for its beautiful decorative effect, strong covering and adhesive power, and splendid water- and weather-resisting qualities.

Besides, the company is in a position to produce various kinds of organic and inorganic heat-insulating materials and epoxy floor paint.

Sophisticated technology, highest quality, credible service—this is a basic management strategy of the company.

The Pyongyang Jonghyang Technology J.V. Company exerts itself to promote exchange and cooperation with many countries of the world.



Pyongyang Songsil Electronic Automation J.V. Company

The Pyongyang Songsil Electronic Automation J.V. Company was incorporated in August 2009 by joint efforts and investment of the Korea General Electronic Industry Corporation and the Tianjin Honesty Ltd. Co. of China.

The company specializes in R&D, production and sale of sophisticated electronic appliances for electric power, including generator control equipment, complete set of equipment for substation and equipment for power distribution.

Its major products comprise various kinds of cabinets for high-voltage distribution board and low-voltage distribution board designed to supply electric power of 380V and regulate the load, feeder boxes for power supply and illumination, control panels and box-type power substations.

Supported by strong think tank, the company is making every endeavour to develop and introduce the cutting-edge technologies into production and modernize production lines on a high level.

It has a production process equipped with sheet-steel processing, welding and assembling machines, including CNC MP10-30 rotary punching machine, CNC MB6-100x3 200 bending machine and CNC M5 8-6x3 200 cutting machine, and inspection and load-test processes so as to ensure the promptness of production and high quality of products.

It also produces a wide range of steel products like lattice window, shell and truss, lighting fixtures and steel-made Korean-style roofing tiles.

Its products used in a large number of projects in the country have been rated high for their excellent performance and the demand for them is increasing with each passing day.

In future, the company will redouble its efforts to strengthen its material and technical foundations under a long-range management strategy and raise the competitiveness in foreign market.



Add: Phyonghon District, Pyongyang, DPR Korea
Fax: 850-2-381-4410/4416
E-mail: js812@star-co.net.kp

Welcome to the **MASIKRYONG SKI RESORT**

The Masikryong Ski Resort, a comprehensive winter sports centre, has been built on the area of Masik Pass in the central part of Korea. Its establishment added much to the beauty of the natural scenery of Masik Pass.

Mask Pass derived its name from a legend which goes that even a horse had to have a rest crossing the steep mountains and thick virgin forest.

The Masik Pass area snows from November to March next year but is mild in winter due to the effect of the oceanic climate and the maximum angle of the slopes is 39.8°. All this provides an ideal condition for skiing.

Covering an area of 1-400 hectares, it has ten ski slopes with a total length of over 100 000 metres and varying widths from 40 to 120 metres, ice rink and snow park for children.

Ski slopes and sledge courses stretching down precipitously like slivery waterfalls, ice rink, chairlifts running up and down ceaselessly, travelers, snowmobiles, snow cannons, snow grooming machines and a large electric sign displaying temperature, humidity, atmospheric pressure and wind—these make the appearance of the ski resort more conspicuous.

The delight of climbing to the top of the snow-covered mountains by cableway looking down on them and the pleasure of skiing down the slopes are beyond imagination.

The tourists can have a rest and take a snack with soft drink, green tea, sponge cake, roast chestnut and sweet potato and steamed rice cake with yeast at the Taehwabong Pavilion on the top of the Taehwa Peak 1 360-m high above

sea level from which they can command a bird's-eye view of the resort and other pavilions.

Masikryong Hotel gives most favourable impression to tourists.

Resembling peak in shape to match well with the scenery of the mountainous area, the hotel covers an area of 25 000 square metres and consists of two blocks.

Having deluxe suits, premium rooms, standard rooms, family rooms and two-person and six-person rooms, it can accommodate hundreds of people.





There are also restaurant for banquet and buffet as well as snack bar, tea house and café. Service facilities include ski school, ski equipment and gear rental, equipment repair, boot drying room, swimming pool, billiard saloon, amusement hall and dancing hall.

Now many working people, youth and students and foreigners visit the ski resort which is equipped with all the conditions needed to the sports and tourism.

A European sportsman said that many countries had ski resorts but the Masikryong Ski Resort was more distinct and wonderful than those and that he could never forget the impression he got in the resort.



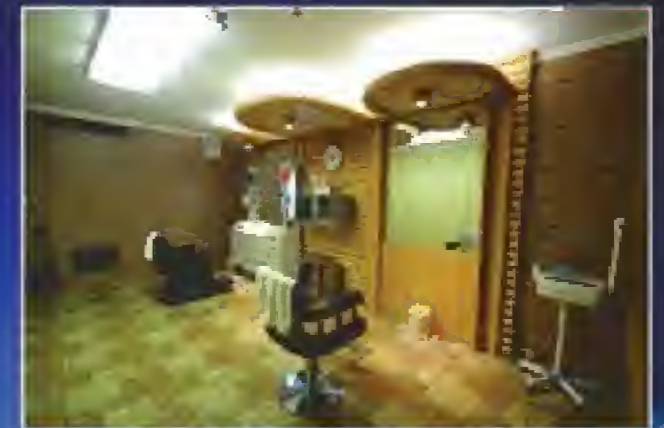
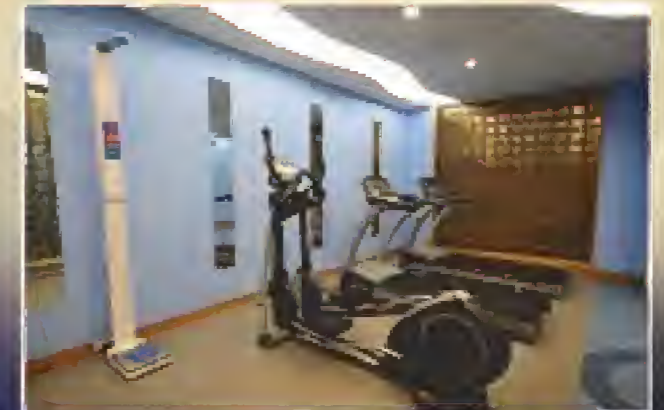
Korea International Travel Company

Add: Phyongchon District, Pyongyang,
DPR Korea

Tel: 850-2-18111-18999(Ext)8238

Fax: 850-2-381-4407

Email: kitc-1@star-co.net.kp



Guide to 2014 Pyongyang Int'l Trade Fair

The Pyongyang International Trade Fair (PITF) is an international economic gathering aimed at developing friendly and cooperative relations among countries in reflection of the intention and demand of economic organs and business people in many countries and regions of the world that hope to achieve common economic development and prosperity of humankind, and facilitating comprehensive and wide-ranging commercial and technical exchanges in economic and trade fields, marketing and invitation of investment.

The Korean International Exhibition Corporation is the host of PITF.

Incorporated on April 17, 1958, the corporation is a professional trade fair organ which forms and dispatches delegations to trade fairs, trade meetings and expositions to be held in different countries and is in charge of organizing and running PITF and other exhibitions of different sectors.

Over the past 50 years, the corporation has organized several hundred rounds of exhibitions at home and abroad through which it positively contributed to promoting friendship and cooperation with other countries and developing foreign trade, and became a full member of Bureau des International Expositions (BIE) on November 19, 2007.

PITF provides opportunities for wide-ranging, many-sided exchanges of commodities and technology, marketing and investment invitation through introduction of companies and commodities, consultation for trade businesses, explanation meeting on the DPRK's policies of investment and joint venture, while developing cooperation and exchanges among companies by carrying on its web site the profiles and addresses of exhibitors and business items they want before and after the fair.

PITF which is held amidst growing interest of business people at home and abroad will perform its mission and role not only as an international gathering for trade conducive to strengthening friendship, cooperation and unity among countries but also as a centre for developing DPRK's science, technology and foreign trade.

Itinerary of 2014 Pyongyang International Trade Fair

Organizer: Korean International Exhibition Corporation

Add: Central District, Pyongyang, DPR Korea

Tel: 850-2-3815926

Fax: 850-2-3814654/3815527

E-mail: kiec@silbank.net.kp

kiec-jonlam@126.com

- 17th Pyongyang Spring Int'l Trade Fair

Date: May 12-15, 2014

Deadline of application: March 31, 2014

- 10th Pyongyang Autumn Int'l Trade Fair

Date: September 22-25, 2014

Deadline of application: August 5, 2014

Venue: New Technology Innovation Exhibition Hall of the Three-Revolution Exhibition House (Add: Sosong District, Pyongyang, DPR Korea)

- Items of exhibits:

- Machines and their manufacturing technology
- Construction machinery and building materials
- Mining equipment and their manufacturing technology
- Energy- and environment-protection products and their technology
- Forwarding business
- Communications and information technology
- Agriculture-related products and their technology
- Foodstuffs and beverages, and their production technology
- Printing and packing machines and their manufacturing technology
- Medical appliances and pharmaceutical equipment, and their manufacturing technology
- Light-industry products
- Vehicles

- Visits and tourist service

MT, Myohyang, West Sea Barrage, Tower of the Juche Idea, Ryongmun Cavern, Victorious Fatherland Liberation War Museum, National Gifts Exhibition House, Toedonggang Combined Fruit Farm, Hana Music Information Centre, aerobics and art performance by students and children.

- Procedure for participation

1. Application for registration

The exhibitor shall fill out and sign the application form provided by the organizer and send its copy to the organizer by e-mail or fax not later than 40 days before the opening of the fair.

2. Rental fee of booths

Along with the application form, the exhibitor shall remit to the organizer 100% of rental fee of booth 30 days before the opening of the fair.

3. Entry procedure

The exhibitor shall submit to the organizer the list of participants' names by e-mail or fax not later than 40 days before the opening of the fair.

The list shall specify the name, sex, date of birth, race, nationality, occupation, kind and number of passport, postal address, telephone number, visa-issuing spot and entry/exit route and date.

4. Exhibits

The exhibitor shall send the list of exhibits to the organizer 30 days before the opening of the fair.

The list shall specify in detail the name of the company and commodities, unit price, amount, total value, number of packages, weight and packing of commodities and the route of their transportation.

5. Customs inspection

All the exhibits shall be subjected to customs inspection in the presence of the exhibitor at the exhibition house one day before the opening of the fair. According to the DPRK Law on Customs, the customs is authorized to dispose of the undeclared or excess articles and the organizer shall not be liable for this.

6. Exhibition booths

The exhibitor shall confirm the location of his/her booth on the floor plan provided by the organizer and is authorized to use it from 3 days before the opening of the fair till one day after its closing.

The exhibitor shall pay for any damage to booth installations and rental fixtures. In case the date of dismantling job is postponed, he/she shall pay the extra charge of 30 % of the total rental fee per day.

7. Advertisement

The exhibitor shall submit to the organizer publications, advertisement and audio-visual materials until 20 days before the opening of the fair and be entitled to the right to advertise his/her exhibits only within the area allotted.

Publications, advertisement and audio-visual materials are not allowed to be used, installed and distributed without consent of the organizer.

- Overseas agents of the Korean International Exhibition Corporation

Exhibition Department of the China Council for the Promotion of International Trade (CCPIT)

Tel: 0086-010-88075015

Fax: 0086-010-88075424

E-mail: wangxiaodan@ccpit.org

- China Technology Investment & Trade (H.K.) Ltd

Tel: 0086-010-64671995

Fax: 0086-010-64672488

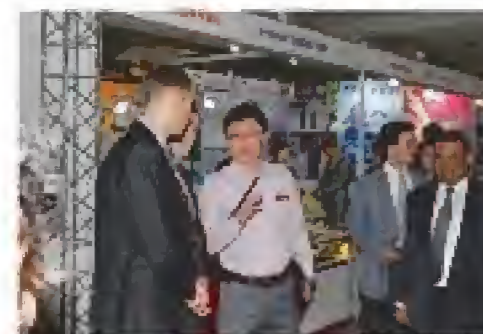
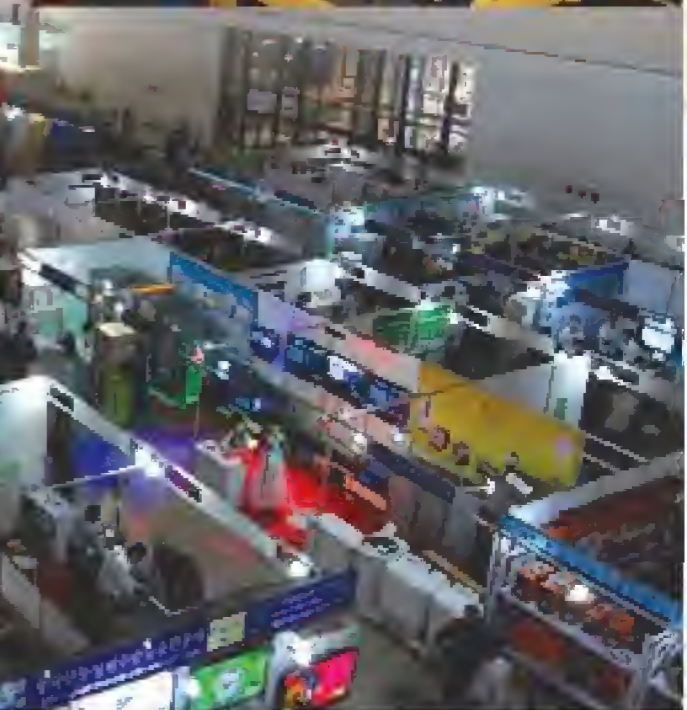
E-mail: hongbing@ctitnk.com.cn

- Southeast Asia, Europe, Middle East, Africa and America

Tel: [65]97129297

Fax: [65]63444119

E-mail: singapore@singnet.com.sg





Saehuimang J.V. Company

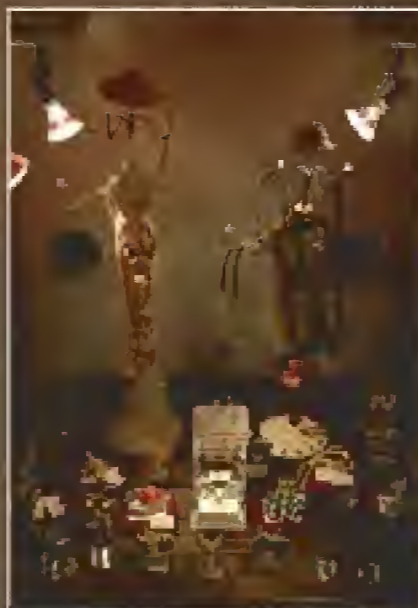
The Saehuimang J.V. Company, set up in 1994, deals in production of components of electronic goods, the running of a hotel and a restaurant, and the sale of fuel oil.

The company has an affiliated factory that processes components of electronic goods, including choking coils, cords and cables, and is staffed with competent technicians and skilled workers.

Its products fully conform with ISO standard and assure fine quality.

The factory annually turns out millions of pieces of choking coils, cords and cables, thus establishing a reputation in the field of electronic component processing at home and abroad.

The company faithfully performs its obligations of contracts concluded with counterparts, including guarantee of quality and observance of delivery date on the credit-first principle.



It conducts brisk business activities through such service establishments as Moranbong Hotel, Moran Restaurant and Saehuimang Fuel Station.

The Moranbong Hotel located on picturesque Moran Hill has a restaurant, a shop, rooms for massage and face treatment, a beauty salon, a barber's and a sauna with sporting facilities. It is now favourite haunt of guests for its kind and satisfactory services.

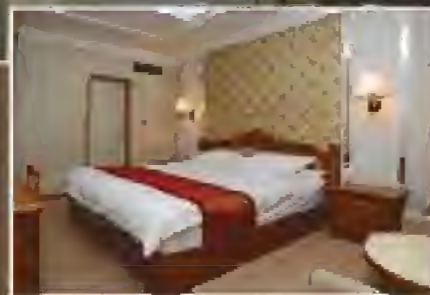
The company is directing great efforts to expanding its business categories and developing exchange and collaborations with many countries.

Add: Moranbong District, Pyongyang, DPR Korea

Tel: 850-2-3812152

Fax: 850-2-3814535

E-mail: newhope@star-co.net.kp



Arirang Patent & Trademark Office

The Arirang Patent & Trademark Office (APTO) located in downtown of Pyongyang, the capital of the DPRK, is a professional agency which deals with IP rights such as patent, trademark and copyrights, and lawsuits related to them.

APTO employs scores of doctors of engineering and laws, patent and trademark attorneys who graduated from the post-graduate course, translators and lawyers.



It conducts its business in close contact with CCPIT Patent & Trademark Law Office, Shanghai Patent & Trademark Law Office, COHAUSZ & FLORACK in Germany and other agencies.

APTO has formed application network for protection of IP rights with 18 patent and trademark agencies in local areas and lots of agencies in more than 50 countries and regions, thus receiving and handling thousands of applications a year.

At present, it renders agent services for patents of cast iron cold-welding rod with nickelless steel core wire [international patent application No.: PCT/KP2010/000021] and high-tension breaker

[international patent application No.: PCT/KP2010/000022], both of which are sophisticated technologies recently developed in our country, trademark of Philip Morris Brands S.A.R.L. in Switzerland and other applications from many countries of the world.

Built up a reliable database for registration of patent and trademark, APTO provides convenience and promptness to local and overseas customers by conducting application, procedure, inspection, management and handling of annuity by means of electronic agency support system.

APTO looks forward to promoting exchange and cooperation with patent offices, companies and applicants in different countries.

Addr: Sosong District, Pyongyang, DPR Korea

Fax: 850-2-381-2100/4100

E-mail: arirangip@star-co.net.kp

arirangip@126.com



Kaesong Koryo Hongsam Powder

At present, three varieties of eight species in the plants belonging to insam family are distributed in many parts of the world. Of them, typical plants are Koryo insam, Chinese ginseng, American ginseng (*Panax quinquefolium*) and Siberian ginseng (*Cortex Eleutherococcus*). Because of its remarkable medicinal effect, Koryo insam, in particular Kaesong Koryo insam, has been widely known to many countries as a natural health supplement.

Especially, Kaesong Koryo Hongsam Powder which is prepared by steaming choice Kaesong Koryo insam is winning popularity among customers.

As a tonic, it is highly efficacious for treatment of such diseases as asthenia after illness, physical and mental fatigue, disorder of sexual function, poor appetite, diarrhea and chronic gastritis. Its medicinal efficacy has been clearly proved by the pharmacological and clinical examinations.

It is recommended to take 1 to 3g three times a day, dissolved in hot water or 6 to 15g each, three times a day after keeping a mixture of 50g powder and 330g honey for about one month. A regular taking of it raises mental and physical abilities.

It is packed in 50g/ bottle and 300g/box.
Please contact:



Korea Jangsu Trading Corporation
Add: Central District, Pyongyang, DPR Korea
Tel: 850-2-18111-8834
Fax: 850-2-381-4410

“Pothonggang” Motorcycle

Features:

- Smooth handlebar
- Swift starting
- Powerful driving force

Technical specifications

Fuel consumption	2.7 lit./100 km
Max. speed	120 km/h
Tank capacity	11 lit.



Phyongchun International Investment Development J.V. Company

Add: Pothonggang District, Pyongyang, DPR Korea
Fax: 850-2-3814410



No. 482101